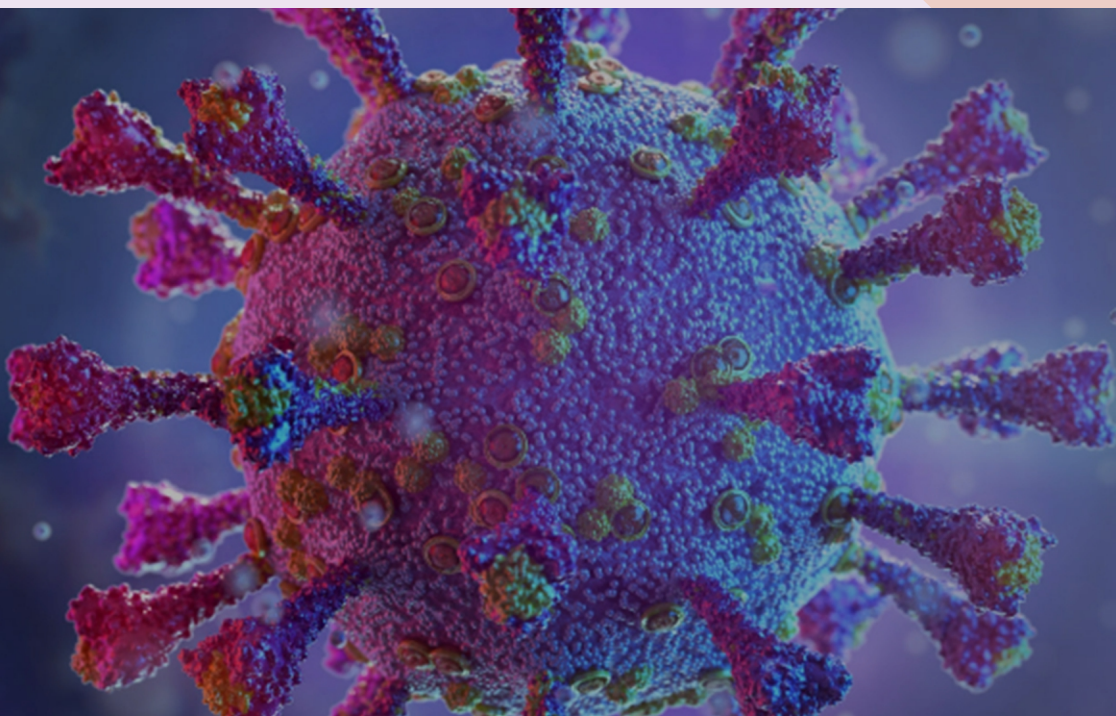




RevMab
Biosciences

BTL Biotechno Labs Pvt. Ltd. **Authorized Channel Partner of** **RevMab Biosciences**

Advanced Antibodies, Improved Detection



RevMab Biosciences USA, Inc. is a biotechnology company focused on the development of recombinant monoclonal antibodies using a revolutionary technology that does not require cell fusion or hybridoma generation. Their mission is to promote personal health by accelerating biomedical research and advancing disease diagnosis. They are the leading supplier of monoclonal antibodies around the globe. **RevMab's** team consists of pioneers in optimizing and transforming rabbit hybridoma technology for commercial application and developing rabbit monoclonal antibodies for research, diagnostic, and therapeutic use. With years of experience and strong expertise in antibody development, **RevMab's** team of scientists aims to revolutionize antibody generation and develop high-quality products in order to reveal true science. **BTL Biotechno Labs Pvt. Ltd.** is the distributor of **RevMab Biosciences** in **India**. We are committed to being the most reliable supplier for life science research products in the entire Indian market and serving the scientific community by providing innovative, reliable, and high-quality research products at an affordable price.

As a distributor of **RevMab Biosciences** in **India**, we provide their complete product range, including primary antibodies, secondary antibodies, reagents, and research pairs, to the scientific community at the best price.

Catalog No.	Product Display Name	Clone Name	Pack Size
31-1006-00	Anti-Mouse Ig Lamda Light Chain rabbit monoclonal antibody [RM110]	RM110	100ug
31-1007-00	Anti-Mouse Ig Kappa Light Chain rabbit monoclonal antibody [RM103]	RM103	100ug
31-1001-00	Anti-Mouse IgG rabbit monoclonal antibody [RM104]	RM104	100ug
31-1002-00	Anti-Mouse IgG1 rabbit monoclonal antibody [RM106]	RM106	100ug
31-1003-00	Anti-Mouse IgG2a kappa rabbit monoclonal antibody [RM107]	RM107	100ug
31-1098-00	Anti-Mouse IgG2a rabbit monoclonal antibody [RM219]	RM219	100ug
31-1004-00	Anti-Mouse IgG2b rabbit monoclonal antibody [RM108]	RM108	100ug
31-1094-00	Anti-Mouse IgG3 rabbit monoclonal antibody [RM218]	RM218	100ug
31-1099-00	Anti-Mouse IgA rabbit monoclonal antibody [RM220]	RM220	100ug
31-1005-00	Anti-Mouse IgM rabbit monoclonal antibody [RM109]	RM109	100ug
31-1103-00	Anti-Mouse IgG2c rabbit monoclonal antibody [RM223]	RM223	100ug
41-1014-00	Anti-Rabbit IgG Fab goat monoclonal antibody [RMG01]	RMG01	100ug
41-1015-00	Anti-Rabbit IgG Fc goat monoclonal antibody [RMG02]	RMG02	100ug
42-1030-00	Anti-Rabbit IgG goat monoclonal antibody [RMG03]	RMG03	100ug
41-1043-00	Anti-Mouse IgG Fab goat monoclonal antibody [RMG05]	RMG05	100ug
41-1044-00	Anti-Mouse IgG Fc goat monoclonal antibody [RMG06]	RMG06	100ug
41-1045-00	Anti-Mouse IgG goat monoclonal antibody [RMG07]	RMG07	100ug
31-1018-00	Anti-Human Gamma Heavy Chain rabbit monoclonal antibody [RM116]	RM116	100ug
31-1028-00	Anti-Human Kappa Light Chain rabbit monoclonal antibody [RM126]	RM126	100ug
31-1029-00	Anti-Human Lambda Light Chain rabbit monoclonal antibody [RM127]	RM127	100ug
32-1031-00	Anti-Human Ig Light Chains rabbit monoclonal antibody [RM129]	RM129	100ug

31-1023-00	Anti-Human IgM rabbit monoclonal antibody [RM121]	RM121	100ug
31-1030-00	Anti-Human IgA rabbit monoclonal antibody [RM128]	RM128	100ug
31-1026-00	Anti-Human IgA1 rabbit monoclonal antibody [RM124]	RM124	100ug
31-1027-00	Anti-Human IgA2 rabbit monoclonal antibody [RM125]	RM125	100ug
31-1025-00	Anti-Human IgD rabbit monoclonal antibody [RM123]	RM123	100ug
31-1024-00	Anti-Human IgE rabbit monoclonal antibody [RM122]	RM122	100ug
31-1019-00	Anti-Human IgG1 rabbit monoclonal antibody [RM117]	RM117	100ug
31-1020-00	Anti-Human IgG2 rabbit monoclonal antibody [RM118]	RM118	100ug
31-1021-00	Anti-Human IgG3 rabbit monoclonal antibody [RM119]	RM119	100ug
31-1022-00	Anti-Human IgG4 rabbit monoclonal antibody [RM120]	RM120	100ug
31-1100-00	Anti-Human IgG4 Fc rabbit monoclonal antibody [RM217]	RM217	100ug
32-1012-00	Anti-Acetylated-Lysine rabbit monoclonal antibody [RM101]	RM101	100ug
31-1009-00	Anti-Phosphothreonine rabbit monoclonal antibody [RM102]	RM102	100ug
32-1011-00	Anti-Phosphotyrosine rabbit monoclonal antibody [RM111]	RM111	100ug
31-1016-00	Anti- α -Tubulin rabbit monoclonal antibody [RM113]	RM113	100uL
31-1013-00	Anti- β -Actin rabbit monoclonal antibody [RM112]	RM112	100uL
31-1017-00	Anti-GAPDH rabbit monoclonal antibody [RM114]	RM114	100uL
31-1032-00	Anti-Acetyl-Histone H3 (Lys14) rabbit monoclonal antibody [RM130]	RM130	100ug
31-1226-00	Anti-Trimethyl-Histone H3 (Lys4) rabbit monoclonal antibody [RM340]	RM340	100ug
31-1046-00	Anti-Monomethyl-Histone H3 (Lys4) rabbit monoclonal antibody [RM140]	RM140	100ug
31-1037-00	Anti-Dimethyl-Histone H3 (Lys4) rabbit monoclonal antibody [RM135]	RM135	100ug

31-1039-00	Anti-Trimethyl-Histone H3 (Lys4) rabbit monoclonal antibody [RM137]	RM137	100ug
31-1047-00	Anti-Dimethyl-Histone H3 (Lys36) rabbit monoclonal antibody [RM141]	RM141	100ug
31-1051-00	Anti-Trimethyl-Histone H3 (Lys36) rabbit monoclonal antibody [RM155]	RM155	100ug
31-1050-00	Anti-Acetyl-Histone H3 (Lys36) rabbit monoclonal antibody [RM154]	RM154	100ug
31-1052-00	Anti-Acetyl-Histone H3 (Lys79) rabbit monoclonal antibody [RM156]	RM156	100ug
31-1049-00	Anti-Monomethyl-Histone H3 (Lys79) rabbit monoclonal antibody [RM147]	RM147	100ug
31-1275-00	Anti-Trimethyl Histone H3 (Lys9) rabbit monoclonal antibody [RM389]	RM389	100ug
31-1054-00	Anti-Acetyl-Histone H3 (Lys9) rabbit monoclonal antibody [RM161]	RM161	100ug
31-1055-00	Anti-Acetyl-Histone H3 (Lys18) rabbit monoclonal antibody [RM166]	RM166	100ug
31-1056-00	Anti-Acetyl-Histone H3 (Lys27) rabbit monoclonal antibody [RM172]	RM172	100ug
31-1059-00	Anti-Dimethyl Histone H3 (Lys9) rabbit monoclonal antibody [RM151]	RM151	100ug
31-1060-00	Anti-Dimethyl Histone H3 (Lys14) rabbit monoclonal antibody [RM165]	RM165	100ug
31-1063-00	Anti-Acetyl-Histone H3 (Lys4) rabbit monoclonal antibody [RM149]	RM149	100ug
31-1064-00	Anti-Monomethyl-Histone H3 (Lys9) rabbit monoclonal antibody [RM150]	RM150	100ug
31-1062-00	Anti-Trimethyl-Histone H3 (Lys27) rabbit monoclonal antibody [RM175]	RM175	100ug
31-1053-00	Anti-Trimethyl-Histone H3 (Lys79) rabbit monoclonal antibody [RM157]	RM157	100ug
31-1075-00	Anti-Dimethyl Histone H3 (Lys18) rabbit monoclonal antibody [RM168]	RM168	100ug

31-1076-00	Anti-Monomethyl-Histone H3 (Lys18) rabbit monoclonal antibody [RM167]	RM167	100ug
31-1077-00	Anti-Dimethyl Histone H3 (Lys23) rabbit monoclonal antibody [RM171]	RM171	100ug
31-1065-00	Anti-Dimethyl Histone H3 (Lys79) rabbit monoclonal antibody [RM181]	RM181	100ug
31-1207-00	Anti-Dimethyl-Histone H3 (Lys9) and Acetyl-Histone H3 (Lys14) [RM322]	RM322	100uL
31-1078-00	Anti-Acetyl-Histone H3 (Lys56) rabbit monoclonal antibody [RM179]	RM179	100ug
31-1079-00	Anti-Phospho-Histone H4 (Ser1) rabbit monoclonal antibody [RM194]	RM194	100ug
31-1080-00	Anti-Monomethyl-Histone H4 (Arg3) rabbit monoclonal antibody [RM195]	RM195	100ug
31-1081-00	Anti-Acetyl-Histone H4 (Lys5) rabbit monoclonal antibody [RM199]	RM199	100ug
31-1082-00	Anti-Acetyl-Histone H4 (Lys8) rabbit monoclonal antibody [RM201]	RM201	100ug
31-1083-00	Anti-Acetyl-Histone H4 (Lys16) rabbit monoclonal antibody [RM204]	RM204	100ug
31-1084-00	Anti-Acetyl-Histone H4 (Lys20) rabbit monoclonal antibody [RM205]	RM205	100ug
31-1086-00	Anti-Histone H3 (Unmodified Lys4) rabbit monoclonal antibody [RM186]	RM186	100ug
31-1087-00	Anti-Acetyl-Histone H3 (Lys23) rabbit monoclonal antibody [RM169]	RM169	100ug
31-1088-00	Anti-Acetyl-Histone H4 (Lys12) rabbit monoclonal antibody [RM202]	RM202	100ug
31-1092-00	Anti-Phospho-Histone H2A/H4 (Ser1) rabbit monoclonal antibody [RM216]	RM216	100ug
31-1070-00	Anti-Phospho-Histone H3 (pSer10) rabbit monoclonal antibody [RM163]	RM163	100ug
31-1072-00	Anti-Phospho-Histone H3 (Thr3) rabbit monoclonal antibody [RM159]	RM159	100ug

31-1093-00	Anti-Phospho-Histone H3 (Thr6) rabbit monoclonal antibody [RM160]	RM160	100ug
31-1073-00	Anti-Phospho-Histone H3 (Thr11) rabbit monoclonal antibody [RM164]	RM164	100ug
31-1097-00	Anti-Trimethyl-Phospho-Histone H3 (Lys9/Ser10) rabbit monoclonal antibody [RM162]	RM162	100ug
31-1095-00	Anti-Monomethyl-Histone H3 (Lys56) rabbit monoclonal antibody [RM180]	RM180	100ug
31-1096-00	Anti-Trimethyl-Histone H4 (Lys20) rabbit monoclonal antibody [RM208]	RM208	100ug
31-1101-00	Anti-Acetyl-Histone H2A.Z (Lys4) rabbit monoclonal antibody [RM221]	RM221	100ug
31-1102-00	Anti-Acetyl-Histone H2A.Z (Lys7) rabbit monoclonal antibody [RM222]	RM222	100ug
31-1113-00	Anti-Acetyl-Histone H2B (Lys20) rabbit monoclonal antibody [RM235]	RM235	100ug
31-1141-00	Anti-Acetyl-Histone H2B (Lys23) rabbit monoclonal antibody [RM260]	RM260	100ug
31-1115-00	Anti-Phospho-Histone H2B (Ser14) rabbit monoclonal antibody [RM238]	RM238	100ug
31-1104-00	Anti-Gamma H2AX (phospho- Ser139) Rabbit Monoclonal Antibody [RM224]	RM224	100ug
31-1118-00	Anti-Core Histone Macro-H2A.1 (H2AFY) rabbit monoclonal antibody [RM248]	RM248	100ug
31-1225-00	Anti-Crotonyl-Histone H3 (Lys9) rabbit monoclonal antibody [RM339]	RM339	100ug
31-1287-00	Anti-Crotonyl-Histone H3 (Lys27) rabbit monoclonal antibody [RM401]	RM401	100ug
31-1336-00	Anti-Acetyl-Histone H2A.X (Lys5) Rabbit Monoclonal Antibody [RM445]	RM445	100ug
31-1337-00	Anti-Acetyl-Histone H2A.X (Lys9) Rabbit Monoclonal Antibody [RM446]	RM446	100ug
31-1347-00	Anti-Acetyl-Histone H2B (Lys5) Rabbit Monoclonal Antibody, Clone RM455	RM455	100ug

31-1348-00	Anti-Acetyl-Histone H2B (Lys11) Rabbit Monoclonal Antibody, Clone RM456	RM456	100ug
31-1349-00	Anti-Monomethyl-Histone H4 (Lys5) Rabbit Monoclonal Antibody, Clone RM457	RM457	100ug
31-1350-00	Anti-Monomethyl-Histone H4 (Lys12) Rabbit Monoclonal Antibody, Clone RM458	RM458	100ug
31-1351-00	Anti-Symmetric Dimethyl-Histone H4 (Arg3) Rabbit Monoclonal Antibody [RM459]	RM459	100ug
31-1383-00	Anti-Trimethyl-Histone H3 (Lys36) Rabbit Monoclonal Antibody, Clone RM491	RM491	100ug
31-1170-00	Anti-25-OH Vitamin D3 Rabbit Monoclonal Antibody [RM3]	RM3	100uL
31-1315-00	Anti-25-OH Vitamin D3/RM3 or 25-OH Vitamin D3/ RMH04 Complexes, Clone RM428	RM428	100ug
54-1316-00	Anti-25-OH Vitamin D3 Rabbit/Human Chimeric Monoclonal Antibody, Clone RMH04	RMH04	100ug
31-1230-00	Anti-Estradiol Rabbit Monoclonal Antibody [RM343]	RM343	100uL
31-1322-00	Anti-Progesterone Rabbit Monoclonal Antibody [RM434]	RM434	100uL
31-1323-00	Anti-Testosterone Rabbit Monoclonal Antibody [RM435]	RM435	100uL
31-1008-00	Anti-Polyethylene Glycol Rabbit Monoclonal Antibody [rm105]	RM105	100ug
31-1110-00	Anti-5-methylcytosine (5-mC) rabbit monoclonal antibody [RM231]	RM231	50 ug
31-1111-00	Anti 5-hydroxymethylcytosine (5-hmC) Rabbit Monoclonal Antibody [RM236]	RM236	50 ug
31-1248-00	Anti-N6-Methyladenosine (m6A) Rabbit Monoclonal Antibody [RM362]	RM362	50 ug
31-1108-00	Anti-Histone H2A rabbit monoclonal antibody [RM225]	RM225	100ug
31-1112-00	Anti-Histone H2B rabbit monoclonal antibody [RM230]	RM230	100ug
31-1090-00	Anti-Histone H2AX rabbit monoclonal antibody [RM214]	RM214	100ug
31-1091-00	Anti-Histone H2AZ rabbit monoclonal antibody [RM215]	RM215	100ug

31-1057-00	Anti-Histone H3 pan rabbit monoclonal antibody [RM188]	RM188	100ug
31-1058-00	Anti-Histone H3.3 rabbit monoclonal antibody [RM190]	RM190	100ug
31-1089-00	Anti-Histone H4 rabbit monoclonal antibody [RM212]	RM212	100ug
31-1048-00	Anti-His-Tag rabbit monoclonal antibody [RM146]	RM146	100ug
54-1161-00	Anti-His-Tag Chimeric Human Monoclonal Antibody, [RMH01]	RMH01	100ug
31-1190-00	Anti-HA-Tag Rabbit Monoclonal Antibody [RM305]	RM305	100ug
54-1191-00	Anti-HA-Tag Chimeric Human Monoclonal Antibody [RMH02]	RMH02	100ug
31-1285-00	Anti-DDDDK Tag (Flag tag sequence) Rabbit Monoclonal Antibody, Clone RM399	RM399	100ug
31-1042-00-S	Anti-BRAF (V600E) rabbit monoclonal antibody [RM8]	RM8	50ug
31-1042-00	Anti-BRAF (V600E) rabbit monoclonal antibody [RM8]	RM8	100ug
31-1160-00-S	Anti-Histone H3 K9M rabbit monoclonal antibody [RM191]	RM191	100ul
31-1160-00-L	Anti-Histone H3 K9M rabbit monoclonal antibody [RM191]	RM191	400ul
31-1250-00-S	Anti-Histone H3 K4M rabbit monoclonal antibody [RM363]	RM363	100ul
31-1250-00-L	Anti-Histone H3 K4M rabbit monoclonal antibody [RM363]	RM363	400ul
31-1085-00-S	Anti-Histone H3 K36M rabbit monoclonal antibody [RM193]	RM193	100ul
31-1085-00-L	Anti-Histone H3 K36M rabbit monoclonal antibody [RM193]	RM193	400ul
31-1175-00-S	Anti-Histone H3 K27M rabbit monoclonal antibody [RM192]	RM192	100ul
31-1175-00-L	Anti-Histone H3 K27M rabbit monoclonal antibody [RM192]	RM192	400ul
31-1120-00-S	Anti-H3.3G34R Mutant rabbit monoclonal antibody [RM240]	RM240	100ul
31-1120-00-L	Anti-H3.3G34R Mutant rabbit monoclonal antibody [RM240]	RM240	400ul
31-1145-00-S	Anti-H3.3G34W Mutant rabbit monoclonal antibody [RM263]	RM263	100ul
31-1145-00-L	Anti-H3.3G34W Mutant rabbit monoclonal antibody [RM263]	RM263	400ul
31-1193-00-S	Anti-Histone H3.3 G34V Rabbit Monoclonal Antibody [RM307]	RM307	100ul

31-1193-00-L	Anti-Histone H3.3 G34V Rabbit Monoclonal Antibody [RM307]	RM307	400ul
31-1109-00	Anti-AR (ARv7 Splice Variant) rabbit monoclonal antibody [RM7]	RM7	100ul
31-1222-00	Anti-Akt (E17K Mutant) Rabbit Monoclonal Antibody [RM336]	RM336	50ug
31-1117-00	Anti-Phospho-Rsk1 (Thr359/Ser363) rabbit monoclonal antibody [RM233]	RM233	100ul
31-1125-00	Anti-p38 MAPK Phospho (pT180/pY182) rabbit monoclonal antibody [RM243]	RM243	100ul
31-1131-00	Anti-Phospho-Akt (Ser473) rabbit monoclonal antibody [RM251]	RM251	100ul
31-1142-00	Anti-Phospho-Stat3 (Tyr705) Rabbit Monoclonal Antibody [RM261]	RM261	100 uL
31-1150-00	Anti-Phospho-EGFR (Y1173) Rabbit Monoclonal Antibody [RM269]	RM269	100 uL
31-1151-00	Anti-Phospho Acetyl CoA Carboxylase (S79) (ACC1) Rabbit Monoclonal Antibody [RM270]	RM270	100 uL
31-1179-00	Anti-Phospho-AMPA Receptor (GluR 1) (Ser845) Rabbit Monoclonal Antibody [RM296]	RM296	100uL
31-1183-00	Anti-phospho-eIF-2 α (pS51) Rabbit Monoclonal Antibody [RM298]	RM298	100uL
31-1334-00	Anti-EGFR (phospho Y1068) Rabbit Monoclonal Antibody [RM443]	RM443	100uL
31-1343-00	Anti-Phospho-p44/42 MAPK (Erk1/2) (Thr202/Tyr204) Rabbit Monoclonal Antibody, Clone RM451	RM451	100uL
31-1344-00	Anti-Phospho-eIF4E (Ser209) Rabbit Monoclonal Antibody, Clone RM452	RM452	100uL
31-1345-00	Anti-Phospho-GSK-3 β (Ser9) Rabbit Monoclonal Antibody, Clone RM453	RM453	100uL
31-1346-00	Anti-Phospho-Aurora A (Thr288)/Aurora B (Thr232)/Aurora C (Thr198) Rabbit Monoclonal Antibody, Clone RM454	RM454	100uL
31-1353-00	Anti-Phospho-Tau (Ser396) Rabbit Monoclonal Antibody [RM461]	RM461	100uL
31-1356-00	Anti-Phospho-JNK1/2/3 (Thr183/Tyr185) Rabbit Monoclonal Antibody [RM464]	RM464	100uL

31-1376-00	Anti-Phospho-Myl2 (Myosin Light Chain 2v) (Ser19) Rabbit Monoclonal Antibody [RM484]	RM484	100uL
31-1379-00	Anti-Phospho-Smad1 (Ser463/465)/ Smad5 (Ser463/465)/ Smad9 (Ser465/467) Rabbit Monoclonal Antibody [RM487]	RM487	100uL
31-1380-00	Anti-Phospho-ULK1 (Autophagy-related protein 1 homolog, ATG1) (Ser757) Rabbit Monoclonal Antibody, Clone RM488	RM488	100uL
31-1204-00	Anti-Acetyl-alpha-Tubulin (Lys40) Rabbit Monoclonal Antibody [RM318]	RM318	100 uL
31-1105-00	Anti-Cytokeratin 5 rabbit monoclonal antibody [RM226]	RM226	100ul
31-1107-00	Anti-HER2 rabbit monoclonal antibody [RM228]	RM228	100ul
31-1116-00	Anti-Acetyl-CoA Carboxylase rabbit monoclonal antibody [RM232]	RM232	100ul
31-1124-00	Anti-Desmin (DESM) rabbit monoclonal antibody [RM234]	RM234	100ul
31-1122-00	Anti-Cyclin D1 (CCND1) rabbit monoclonal antibody [RM241]	RM241	100ul
31-1121-00	Anti-HIF-1 alpha (HIF1A) rabbit monoclonal antibody [RM242]	RM242	100ul
31-1123-00	Anti-E-Cadherin (CDH1) rabbit monoclonal antibody [RM244]	RM244	100ul
31-1126-00	Anti-p38 MAPK rabbit monoclonal antibody [RM245]	RM245	100ul
31-1127-00	Anti-GFAP rabbit monoclonal antibody [RM246]	RM246	100ul
31-1128-00	Anti-CD31 (PECAM-1) rabbit monoclonal antibody [RM247]	RM247	100ul
31-1129-00	Anti-CD146 rabbit monoclonal antibody [RM249]	RM249	100ul
31-1130-00	Anti-Caspase-3 rabbit monoclonal antibody [RM250]	RM250	100ul
31-1133-00	Anti-ACTA2 rabbit monoclonal antibody [RM253]	RM253	100ul
31-1132-00	Anti-Akt1 rabbit monoclonal antibody [RM252]	RM252	100ul
31-1135-00	Anti-AR (N-terminal) rabbit monoclonal antibody [RM254]	RM254	100 uL
31-1136-00	Anti-AR (C-terminal) rabbit monoclonal antibody [RM255]	RM255	100 uL
31-1143-00	Anti-Calponin-1 Rabbit Monoclonal Antibody [RM262]	RM262	100 uL

31-1140-00	Anti-N-Cadherin (CDH2) Rabbit Monoclonal Antibody [RM259]	RM259	100 uL
31-1137-00	Anti-Paxillin Rabbit Monoclonal Antibody [RM256]	RM256	100 uL
31-1138-00	Anti-Alpha Cardiac Actin (ACTC1) Rabbit Monoclonal Antibody [RM257]	RM257	100 uL
31-1139-00	Anti-Synaptophysin Rabbit Monoclonal Antibody [RM258]	RM258	100 uL
31-1146-00	Anti-CD44 Rabbit Monoclonal Antibody [RM264]	RM264	100 uL
31-1147-00	Anti-PTEN Rabbit Monoclonal Antibody [RM265]	RM265	100 uL
31-1148-00	Anti-CK8 (Cytokeratin-8) Rabbit Monoclonal Antibody [RM266]	RM266	100 uL
31-1144-00	Anti-p16INK4a (CDKN2A) Rabbit Monoclonal Antibody [RM267]	RM267	100 uL
31-1149-00	Anti-Integrin alpha 4 (ITGA4) Rabbit Monoclonal Antibody [RM268]	RM268	100 uL
31-1152-00	Anti-Smac/Diablo Rabbit Monoclonal Antibody [RM271]	RM271	100 uL
31-1153-00	Anti-CD20 Rabbit Monoclonal Antibody [RM272]	RM272	100 uL
31-1154-00	Anti-NFkB p65 Rabbit Monoclonal Antibody [RM273]	RM273	100 uL
31-1155-00	Anti-mTOR Rabbit Monoclonal Antibody [RM274]	RM274	100 uL
31-1156-00	Anti-JAM1 Rabbit Monoclonal Antibody [RM275]	RM275	100 uL
31-1157-00	Anti-Beta-Catenin 1 (CTNNB1) Rabbit Monoclonal Antibody [RM276]	RM276	100 uL
31-1158-00	Anti-Smad4 Rabbit Monoclonal Antibody [RM277]	RM277	100 uL
31-1159-00	Anti-Aurora-B (AURKB) Rabbit Monoclonal Antibody [RM278]	RM278	100 uL
31-1162-00	Anti-CK18 (Cytokeratin-18) Rabbit Monoclonal Antibody [RM279]	RM279	100 uL
31-1163-00	Anti-Neurofilament-L (NF-L) Rabbit Monoclonal Antibody [RM280]	RM280	100 uL
31-1164-00	Anti-Cyclin B1 Rabbit Monoclonal Antibody [RM281]	RM281	100 uL
31-1166-00	Anti-CK20 (Cytokeratin-20) Rabbit Monoclonal Antibody [RM283]	RM283	100 uL
31-1167-00	Anti-CK7 (Cytokeratin-7) Rabbit Monoclonal Antibody [RM284]	RM284	100 uL
31-1176-00	Anti-ER alpha Rabbit Monoclonal Antibody [RM292]	RM292	100uL

31-1178-00	Anti-EGF Receptor Rabbit Monoclonal Antibody [RM294]	RM294	100uL
31-1168-00	Anti-CD45 Rabbit Monoclonal Antibody [RM291]	RM291	100uL
31-1169-00	Anti-CD29 Rabbit Monoclonal Antibody [RM285]	RM285	100uL
31-1177-00	Anti-LC3B Rabbit Monoclonal Antibody [RM293]	RM293	100uL
31-1171-00	Anti-Alpha Actinin-4 Rabbit Monoclonal Antibody [RM287]	RM287	100uL
31-1172-00	Anti-PSD-95 Rabbit Monoclonal Antibody [RM288]	RM288	100uL
31-1173-00	Anti-Vimentin Rabbit Monoclonal Antibody [RM289]	RM289	100uL
31-1174-00	Anti-CD11b (integrin alpha-M) Rabbit Monoclonal Antibody [RM290]	RM290	100uL
31-1182-00	Anti-CD79a (C-term) Rabbit Monoclonal Antibody [RM297]	RM297	100uL
31-1184-00	Anti-NF-kappa-B p105/p50 (NFkB) Rabbit Monoclonal Antibody [RM299]	RM299	100uL
31-1185-00	Anti-CD34 (C-term) Rabbit Monoclonal Antibody [RM300]	RM300	100uL
31-1186-00	Anti-AMPK alpha-1 (AMPKA1) (5'-AMP-activated protein kinase catalytic subunit alpha-1) Rabbit Monoclonal Antibody [RM301]	RM301	100uL
31-1187-00	Anti-p27Kip1 (Cyclin-dependent kinase inhibitor 1B) Rabbit Monoclonal Antibody [RM302]	RM302	100uL
31-1188-00	Anti-CD140b (C-term) (PDGFR-beta) (Platelet-derived growth factor receptor beta) Rabbit Monoclonal Antibody [RM303]	RM303	100uL
31-1189-00	Anti-S100-beta Rabbit Monoclonal Antibody [RM304]	RM304	100uL
31-1192-00	Anti-MYD88 Rabbit Monoclonal Antibody [RM306]	RM306	100uL
31-1194-00	Anti-BRAF Rabbit Monoclonal Antibody [RM308]	RM308	100uL
31-1205-00	Anti-PD-L1 (CD274) (B7-H1) Rabbit Monoclonal Antibody [RM320]	RM320	100uL
31-1195-00	Anti-PD-1 (CD279) Rabbit Monoclonal Antibody [RM309]	RM309	100uL
31-1198-00	Anti-NeuN (Fox3, RBFOX3) Rabbit Monoclonal Antibody [RM312]	RM312	100 uL

31-1199-00	Anti-OX40 (CD134) Rabbit Monoclonal Antibody [RM313]	RM313	100 uL
31-1200-00	Anti-CD5 Rabbit Monoclonal Antibody [RM314]	RM314	100 uL
31-1201-00	Anti-CD56 Rabbit Monoclonal Antibody [RM315]	RM315	100 uL
31-1202-00	Anti-AKT (PH domain) Rabbit Monoclonal Antibody [RM316]	RM316	100 uL
31-1203-00	Anti-PLAP Rabbit Monoclonal Antibody [RM317]	RM317	100 uL
31-1196-00	Anti-BAG-1L Rabbit Monoclonal Antibody [RM310]	RM310	100 uL
31-1211-00	Anti-Calretinin (CALB2) Rabbit Monoclonal Antibody [RM324]	RM324	100uL
31-1212-00	Anti-Caveolin-1 Rabbit Monoclonal Antibody [RM325]	RM325	100uL
31-1213-00	Anti-CEA (CD66e) Rabbit Monoclonal Antibody [RM326]	RM326	100uL
31-1214-00	Anti-PSMA Rabbit Monoclonal Antibody [RM327]	RM327	100uL
31-1215-00	Anti-CK-14 (Cytokeratin-14) Rabbit Monoclonal Antibody [RM328]	RM328	100uL
31-1217-00	Anti-hCG (Human Chorionic Gonadotropin) Rabbit Monoclonal Antibody [RM330]	RM330	100uL
31-1218-00	Anti-PAX-5 (paired box protein) Rabbit Monoclonal Antibody [RM331]	RM331	100uL
31-1219-00	Anti-CD19 Rabbit Monoclonal Antibody [RM332]	RM332	100uL
31-1220-00	Anti-MART1 Rabbit Monoclonal Antibody [RM333]	RM333	100uL
31-1221-00	Anti-Surfactant protein A (SP-A) Rabbit Monoclonal Antibody [RM334]	RM334	100uL
31-1223-00	Anti-CD276 (B7-H3) Rabbit Monoclonal Antibody [RM335]	RM335	100uL
31-1210-00	Anti-PSA (Prostate Specific Antigen) Rabbit Monoclonal Antibody [RM323]	RM323	100uL
31-1235-00	Anti-p504s/AMACR Rabbit Monoclonal Antibody [RM349]	RM349	100uL
31-1237-00	Anti-Cytokeratin 17 (CK-17) Rabbit Monoclonal Antibody [RM351]	RM351	100uL
31-1224-00	Anti-CD10 Rabbit Monoclonal Antibody [RM337]	RM337	100uL
31-1229-00	Anti-CD3E Rabbit Monoclonal Antibody [RM344]	RM344	100uL

31-1231-00	Anti-CD4 Rabbit Monoclonal Antibody [RM345]	RM345	100uL
31-1234-00	Anti-COX-2 Rabbit Monoclonal Antibody [RM348]	RM348	100uL
31-1233-00	Anti-GST3/GST pi Rabbit Monoclonal Antibody [RM347]	RM347	100uL
31-1232-00	Anti-Spastin Rabbit Monoclonal Antibody [RM346]	RM346	100uL
31-1236-00	Anti-Stathmin (STMN1) Rabbit Monoclonal Antibody [RM350]	RM350	100uL
31-1238-00	Anti-MUM1/IRF4 Rabbit Monoclonal Antibody [RM352]	RM352	100uL
31-1239-00	Anti-p120-catenin Rabbit Monoclonal Antibody [RM353]	RM353	100uL
31-1240-00	Anti-CD5 Rabbit Monoclonal Antibody [RM354]	RM354	100uL
31-1241-00	Anti-Cytokeratin 4 (CK-4) Rabbit Monoclonal Antibody [RM355]	RM355	100uL
31-1245-00	Anti-CD117/c-Kit Rabbit Monoclonal Antibody [RM359]	RM359	100uL
31-1247-00	Anti-ALK Rabbit Monoclonal Antibody [RM361]	RM361	100uL
31-1249-00	Anti-Cytokeratin 19 (CK-19) Rabbit Monoclonal Antibody [RM364]	RM364	100uL
31-1251-00	Anti-SATB2 Rabbit Monoclonal Antibody [RM365]	RM365	100uL
31-1252-00	Anti-Napsin-A Rabbit Monoclonal Antibody [RM366]	RM366	100uL
31-1253-00	Anti-Syntaxin-1A Rabbit Monoclonal Antibody [RM367]	RM367	100uL
31-1254-00	Anti-TPO (Thyroid Peroxidase) Rabbit Monoclonal Antibody [RM368]	RM368	100uL
31-1255-00	Anti-MyoD1 Rabbit Monoclonal Antibody [RM369]	RM369	100uL
31-1256-00	Anti-SP-B (Surfactant protein B) Rabbit Monoclonal Antibody [RM370]	RM370	100uL
31-1257-00	Anti-CD163 Rabbit Monoclonal Antibody [RM371]	RM371	100uL
31-1258-00	Anti-CD21 Rabbit Monoclonal Antibody [RM372]	RM372	100uL
31-1259-00	Anti-TTF1 (Thyroid transcription factor 1) Rabbit Monoclonal Antibody [RM373]	RM373	100uL
31-1260-00	Anti-c-Fos Rabbit Monoclonal Antibody [RM374]	RM374	100uL

31-1261-00	Anti-MSH2 Rabbit Monoclonal Antibody [RM375]	RM375	100uL
31-1262-00	Anti-MSH6 Rabbit Monoclonal Antibody [RM376]	RM376	100uL
31-1263-00	Anti-Arginase-1 (ARG1) Rabbit Monoclonal Antibody [RM377]	RM377	100uL
31-1264-00	Anti-BOB-1/OBF-1 Rabbit Monoclonal Antibody [RM378]	RM378	100uL
31-1265-00	Anti-Terminal deoxynucleotidyl transferase (TdT) Rabbit Monoclonal Antibody [RM379]	RM379	100uL
31-1267-00	Anti-Matrix metalloproteinase-12 (MMP-12) Rabbit Monoclonal Antibody [RM381]	RM381	100uL
31-1242-00	Anti-BAG-1 Rabbit Monoclonal Antibody [RM356]	RM356	100 uL
31-1227-00	Anti-CK-5/CK-6 (Cytokeratin 5/ Cytokeratin 6) Rabbit Monoclonal Antibody [RM341]	RM341	100 uL
31-1243-00	Anti-PR (Progesterone Receptor) Rabbit Monoclonal Antibody [RM357]	RM357	100uL
31-1246-00	Anti-KI67 rabbit monoclonal antibody [RM360]	RM360	100uL
31-1268-00	Anti-Integrin β 3/CD61 rabbit monoclonal antibody [RM382]	RM382	100uL
31-1269-00	Anti-p63 (Tumor protein 63) Rabbit Monoclonal Antibody [RM383]	RM383	100uL
31-1270-00	Anti-CD71 rabbit monoclonal antibody [RM384]	RM384	100uL
31-1271-00	Anti-Chromogranin A rabbit monoclonal antibody [RM385]	RM385	100uL
31-1272-00	Anti-Cytokeratin 10 (CK-10) Rabbit Monoclonal Antibody [RM386]	RM386	100uL
31-1273-00	Anti-p53 Rabbit Monoclonal Antibody [RM387]	RM387	100uL
31-1274-00	Anti-CD38 Rabbit Monoclonal Antibody [RM388]	RM388	100uL
31-1278-00	Anti-p40 (Δ Np63) Rabbit Monoclonal Antibody [RM392]	RM392	100uL
31-1279-00	Anti-CD1a Rabbit Monoclonal Antibody [RM393]	RM393	100uL
31-1280-00	Anti-TOP2a (Topoisomerase II α) Rabbit Monoclonal Antibody [RM394]	RM394	100uL
31-1281-00	Anti-CPS1 Rabbit Monoclonal Antibody [RM395]	RM395	100uL
31-1282-00	Anti-CALD1 (Caldesmon) Rabbit Monoclonal Antibody [RM396]	RM396	100uL

31-1283-00	Anti-CD8a Rabbit Monoclonal Antibody [RM397]	RM397	100uL
31-1284-00	Anti-CD33 Rabbit Monoclonal Antibody [RM398]	RM398	100uL
31-1277-00	Anti-VEGFA Rabbit Monoclonal Antibody [RM391]	RM391	100uL
31-1286-00	Anti-Helicobacter pylori Rabbit Monoclonal Antibody [RM400]	RM400	100uL
31-1276-00	Anti-IDH1(R132H) Rabbit Monoclonal Antibody [RM390]	RM390	100uL
31-1266-00	Anti-EGFR (L858R) Rabbit Monoclonal Antibody [RM380]	RM380	100uL
31-1288-00	Anti-Foxp1 Rabbit Monoclonal Antibody [RM402]	RM402	100uL
31-1289-00	Anti-CD13 Rabbit Monoclonal Antibody [RM403]	RM403	100uL
31-1290-00	Anti-CD28 Rabbit Monoclonal Antibody [RM404]	RM404	100uL
31-1291-00	Anti-MSH3 Rabbit Monoclonal Antibody [RM405]	RM405	100uL
31-1292-00	Anti-CD23 Rabbit Monoclonal Antibody [RM406]	RM406	100uL
31-1293-00	Anti-MPO Rabbit Monoclonal Antibody [RM407]	RM407	100uL
31-1294-00	Anti-ZAP70 Rabbit Monoclonal Antibody [RM408]	RM408	100uL
31-1295-00	Anti-p16INK4a Rabbit Monoclonal Antibody [RM409]	RM409	100uL
31-1301-00	Anti-CD14 Rabbit Monoclonal Antibody [RM415]	RM415	100uL
31-1302-00	Anti-CK-7 (Cytokeratin-7) Rabbit Monoclonal Antibody [RM416]	RM416	100uL
31-1303-00	Anti-CD278 Rabbit Monoclonal Antibody [RM417]	RM417	100uL
31-1304-00	Anti-CD25 (IL2R α) Rabbit Monoclonal Antibody [RM418]	RM418	100uL
31-1305-00	Anti-EGFR Variant III (EGFRvIII) Rabbit Monoclonal Antibody [RM419]	RM419	100uL
31-1309-00	Anti-Musashi 2(MSI2) Rabbit Monoclonal Antibody [RM422]	RM422	100uL
31-1310-00	Anti-Pan TRK Rabbit Monoclonal Antibody [RM423]	RM423	100uL
31-1311-00	Anti-Annexin A1 Rabbit Monoclonal Antibody [RM424]	RM424	100uL
31-1312-00	Anti-CD30 Rabbit Monoclonal Antibody [RM425]	RM425	100uL

31-1313-00	Anti-Prostein (SLC45A3) Rabbit Monoclonal Antibody [RM426]	RM426	100uL
31-1314-00	Anti-Sox2 Rabbit Monoclonal Antibody [RM427]	RM427	100uL
31-1317-00	Anti-Helicobacter Pylori (H.Pylori) Rabbit Monoclonal Antibody [RM429]	RM429	100uL
31-1318-00	Anti-Nkx3.1 Rabbit Monoclonal Antibody [RM430]	RM430	100uL
31-1319-00	Anti-CD73 Rabbit Monoclonal Antibody [RM431]	RM431	100uL
31-1320-00	Anti-HSP70 Rabbit Monoclonal Antibody [RM432]	RM432	100uL
31-1321-00	Anti-RNASEH2B Rabbit Monoclonal Antibody [RM433]	RM433	100uL
31-1324-00	Anti-PAX8 Rabbit Monoclonal Antibody [RM436]	RM436	100uL
31-1328-00	Anti-Clusterin Rabbit Monoclonal Antibody [RM437]	RM437	100uL
31-1329-00	Anti-p70S6K Rabbit Monoclonal Antibody [RM438]	RM438	100uL
31-1330-00	Anti-HDAC3 Rabbit Monoclonal Antibody [RM439]	RM439	100uL
31-1331-00	Anti-ANO1 / DOG1 / TMEM16A Rabbit Monoclonal Antibody [RM440]	RM440	100uL
31-1332-00	Anti-Granzyme B Rabbit Monoclonal Antibody [RM441]	RM441	100uL
31-1333-00	Anti-Cleaved Caspase 8 Rabbit Monoclonal Antibody [RM442]	RM442	100uL
31-1335-00	Anti-Detyrosinated alpha Tubulin Rabbit Monoclonal Antibody [RM444]	RM444	100uL
31-1339-00	Anti-Δ2 α-Tubulin (dC2-alpha-tubulin) Rabbit Monoclonal Antibody [RM447]	RM447	100uL
31-1340-00	Anti-TIM3 (Hepatitis A virus cellular receptor 2) Rabbit Monoclonal Antibody [RM448]	RM448	100uL
31-1341-00	Anti-Podoplanin (gp36) Rabbit Monoclonal Antibody [RM449]	RM449	100uL
31-1355-00	Anti-Asprosin Rabbit Monoclonal Antibody [RM463]	RM463	100uL
31-1357-00	Anti-Stat3 Rabbit Monoclonal Antibody [RM465]	RM465	100uL
31-1370-00	Anti-MSH2 Rabbit Monoclonal Antibody [RM478]	RM478	100uL

31-1375-00	Anti-Erk2 (p42-MAPK) Rabbit Monoclonal Antibody [RM483]	RM483	100uL
31-1377-00	Anti-DDIT3 (DNA damage-inducible transcript 3 protein) Rabbit Monoclonal Antibody [RM485]	RM485	100uL
31-1378-00	Anti-CAIX (CA9) Rabbit Monoclonal Antibody [RM486]	RM486	100uL
31-1381-00	Anti-Muc-1 (Mucin-1) (CA 15-3) (DF3) Rabbit Monoclonal Antibody, Clone RM489	RM489	100uL
31-1382-00	Anti-TIA1 (Cytotoxic granule associated RNA binding protein TIA1) (T-cell-restricted intracellular antigen-1) Rabbit Monoclonal Antibody, Clone RM490	RM490	100uL
31-1307-00	Anti-SARS-CoV-2 (2019-nCov) Nucleocapsid Rabbit Monoclonal Antibody [RM420]	RM420	100ug
54-1306-00	Anti-SARS-CoV-2 (2019-nCov) Nucleocapsid Chimeric Human Monoclonal Antibody [RMH03]	RMH03	100ug
31-1296-00	Anti-OMP Helicobacter pylori Rabbit Monoclonal Antibody [RM410]	RM410	100uL
31-1297-00	Anti-OMP Helicobacter pylori Rabbit Monoclonal Antibody [RM411]	RM411	100uL
31-1298-00	Anti-Urease Helicobacter pylori Rabbit Monoclonal Antibody [RM412]	RM412	100uL
31-1299-00	Anti-HP-NAP Helicobacter pylori Rabbit Monoclonal Antibody [RM413]	RM413	100uL
31-1300-00	Anti-HP-NAP Helicobacter pylori Rabbit Monoclonal Antibody [RM414]	RM414	100uL
	Biotin Conjugates		
31-1210-02	Biotinylated Anti-PSA (Prostate Specific Antigen) Rabbit Monoclonal Antibody [RM323]	RM323	50uL
31-1315-02	Biotinylated Anti-25-OH Vitamin D3/RM3 or 25-OH Vitamin D3/RMH04 Complexes [RM428]	RM428	50ug
31-1006-02	Biotin Anti-Mouse Ig Lamda Light Chain rabbit monoclonal antibody [RM110]	RM110	50ug

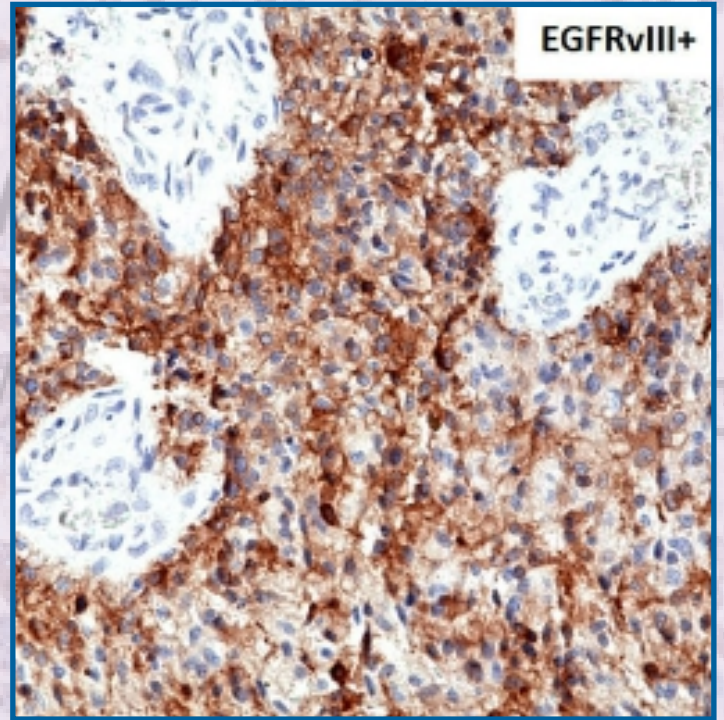
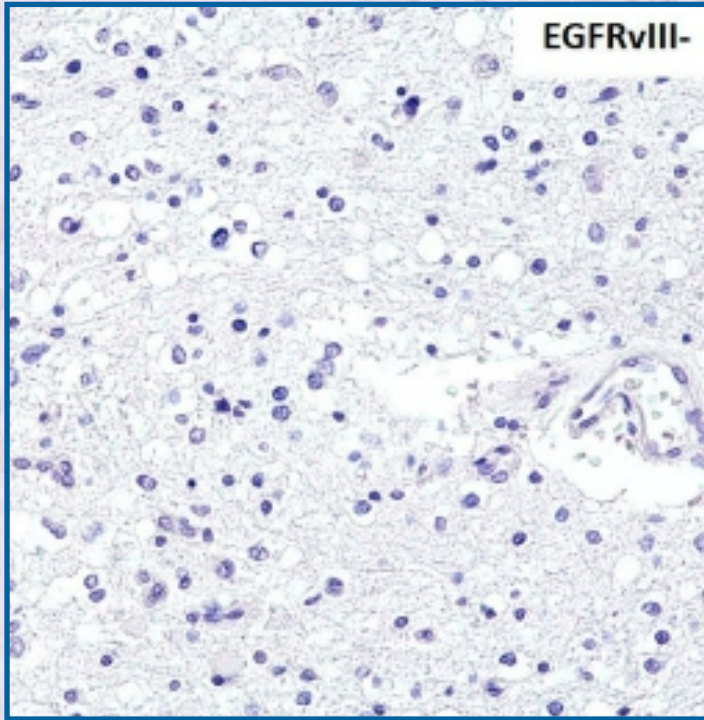
31-1007-02	Biotin Anti-Mouse Ig Kappa Light Chain rabbit monoclonal antibody [RM103]	RM103	50ug
31-1001-02	Biotin Anti-Mouse IgG rabbit monoclonal antibody [RM104]	RM104	50ug
31-1002-02	Biotin Anti-Mouse IgG1 rabbit monoclonal antibody [RM106]	RM106	50ug
31-1003-02	Biotin Anti-Mouse IgG2a kappa rabbit monoclonal antibody [RM107]	RM107	50ug
31-1098-02	Biotin Anti-Mouse IgG2a rabbit monoclonal antibody [RM219]	RM219	50ug
31-1004-02	Biotin Anti-Mouse IgG2b rabbit monoclonal antibody [RM108]	RM108	50ug
31-1094-02	Biotin Anti-Mouse IgG3 rabbit monoclonal antibody [RM218]	RM218	50ug
31-1099-02	Biotin Anti-Mouse IgA rabbit monoclonal antibody [RM220]	RM220	50ug
31-1005-02	Biotin Anti-Mouse IgM rabbit monoclonal antibody [RM109]	RM109	50ug
31-1103-02	Biotin Anti-Mouse IgG2c rabbit monoclonal antibody [RM223]	RM223	50ug
41-1014-02	Biotin Anti-Rabbit IgG Fab goat monoclonal antibody [RMG01]	RMG01	50ug
41-1015-02	Biotin Anti-Rabbit IgG Fc goat monoclonal antibody [RMG02]	RMG02	50ug
42-1030-02	Biotin Anti-Rabbit IgG goat monoclonal antibody [RMG03]	RMG03	50ug
41-1043-02	Biotin Anti-Mouse IgG Fab goat monoclonal antibody [RMG05]	RMG05	50ug
41-1044-02	Biotin Anti-Mouse IgG Fc goat monoclonal antibody [RMG06]	RMG06	50ug
41-1045-02	Biotin Anti-Mouse IgG goat monoclonal antibody [RMG07]	RMG07	50ug
31-1018-02	Biotin Anti-Human Gamma Heavy Chain rabbit monoclonal antibody [RM116]	RM116	50ug
32-1031-02	Biotin Anti-Human Ig Light Chains rabbit monoclonal antibody [RM129]	RM129	50ug
31-1028-02	Biotin Anti-Human Kappa Light Chain rabbit monoclonal antibody [RM126]	RM126	50ug
31-1029-02	Biotin Anti-Human Lambda Light Chain rabbit monoclonal antibody [RM127]	RM127	50ug
31-1023-02	Biotin Anti-Human IgM rabbit monoclonal antibody [RM121]	RM121	50ug

31-1030-02	Biotin Anti-Human IgA rabbit monoclonal antibody [RM128]	RM128	50ug
31-1026-02	Biotin Anti-Human IgA1 rabbit monoclonal antibody [RM124]	RM124	50ug
31-1027-02	Biotin Anti-Human IgA2 rabbit monoclonal antibody [RM125]	RM125	50ug
31-1025-02	Biotin Anti-Human IgD rabbit monoclonal antibody [RM123]	RM123	50ug
31-1024-02	Biotin Anti-Human IgE rabbit monoclonal antibody [RM122]	RM122	50ug
31-1019-02	Biotin Anti-Human IgG1 rabbit monoclonal antibody [RM117]	RM117	50ug
31-1020-02	Biotin Anti-Human IgG2 rabbit monoclonal antibody [RM118]	RM118	50ug
31-1021-02	Biotin Anti-Human IgG3 rabbit monoclonal antibody [RM119]	RM119	50ug
31-1022-02	Biotin Anti-Human IgG4 rabbit monoclonal antibody [RM120]	RM120	50ug
31-1100-02	Biotin Anti-Human IgG4 Fc rabbit monoclonal antibody [RM217]	RM217	50ug
31-1016-02	Biotin Anti- α -Tubulin rabbit monoclonal antibody [RM113]	RM113	50 uL
31-1013-02	Biotin Anti- β -Actin rabbit monoclonal antibody [RM112]	RM112	50 uL
31-1017-02	Biotin Anti-GAPDH rabbit monoclonal antibody [RM114]	RM114	50 uL
31-1048-02	Biotin Anti-His-Tag rabbit monoclonal antibody [RM146]	RM146	50ug
31-1190-02	Biotin Anti-HA-Tag Rabbit Monoclonal Antibody [RM305]	RM305	50ug
31-1008-02	Biotin Anti-PEG (methoxy group) rabbit monoclonal antibody [RM105]	RM105	50ug
31-1042-02	Biotin Anti-BRAF (V600E) rabbit monoclonal antibody [RM8]	RM8	50ug
31-1160-02	Biotin Anti-Histone H3 K9M rabbit monoclonal antibody [RM191]	RM191	50ul
31-1250-02	Biotin Anti-Histone H3 K4M rabbit monoclonal antibody [RM363]	RM363	50ul
31-1085-02	Anti-Histone H3 K36M rabbit monoclonal antibody [RM193]	RM193	50ul
31-1175-02	Biotin Anti-Histone H3 K27M rabbit monoclonal antibody [RM192]	RM192	50ul
31-1120-02	Biotin Anti-H3.3G34R Mutant rabbit monoclonal antibody [RM240]	RM240	50ul

31-1145-02	Biotin Anti-H3.3G34W Mutant rabbit monoclonal antibody [RM263]	RM263	50ul
31-1193-02	Biotin Anti-Histone H3.3 G34V Rabbit Monoclonal Antibody [RM307]	RM307	50ul
31-1109-02	Biotin Anti-AR (ARv7 Splice Variant) rabbit monoclonal antibody [RM7]	RM7	50ul
31-1222-02	Biotin Anti-Akt (E17K Mutant) Rabbit Monoclonal Antibody [RM336]	RM336	50ug
31-1276-02	Biotin Anti-IDH1(R132H) Rabbit Monoclonal Antibody [RM390]	RM390	50ul
31-1266-02	Biotin Anti-EGFR (L858R) Rabbit Monoclonal Antibody [RM380]	RM380	50ul
31-1305-02	Biotin Anti-EGFR Variant III (EGFRvIII) Rabbit Monoclonal Antibody [RM419]	RM419	50ul
31-1371-MK	Matched Pair Kits		
	Product Display Name	Clone Name	Pack Size
	Human LAIR2 Matched Antibody Pair	RM479/RM480	Capture: 100ug,, Detection: 50ug;
31-1315-MK	25-OH Vitamin D3 Matched Antibody Pair	RMH04 Anti-25-OH Vitamin D3 Rabbit/Human Chimeric Monoclonal Antibody RM428 Biotinylated Anti-25-OH Vitamin D3/RM3 or 25-OH Vitamin D3/ RMH04 Complexes Rabbit Monoclonal Antibody	Capture: 100ug,, Detection: 50ug;
31-1019-MK	Human IgG1 ELISA Matched Antibody Pair	RM117 Anti-Human IgG1 Rabbit Monoclonal Antibody RM129 Biotin Anti-Human Ig Light Chain Rabbit Monoclonal Antibody	Capture: 100ug,, Detection: 25ug; Diluent: 10mL
31-1020-MK	Human IgG2 ELISA Matched Antibody Pair	RM118 Anti-Human IgG2 Rabbit Monoclonal Antibody RM129 Biotin Anti-Human Ig Light Chain Rabbit Monoclonal Antibody	Capture: 100ug,, Detection: 25ug; Diluent: 10mL

31-1021-MK	Human IgG3 ELISA Matched Antibody Pair	RM119 Anti-Human IgG3 Rabbit Monoclonal Antibody RM129 Biotin Anti-Human Ig Light Chain Rabbit Monoclonal Antibody	Capture: 100ug, Detection: 25ug; Diluent: 10mL
31-1022-MK	Human IgG4 ELISA Matched Antibody Pair	RM120 Anti-Human IgG4 Rabbit Monoclonal Antibody RM129 Biotin Anti-Human Ig Light Chain Rabbit Monoclonal Antibody	Capture: 100ug, Detection: 25ug; Diluent: 10mL
31-1030-MK	Human IgA ELISA Matched Antibody Pair	RM128 Anti-Human IgG4 Rabbit Monoclonal Antibody RM129 Biotin Anti-Human Ig Light Chain Rabbit Monoclonal Antibody	Capture: 100ug, Detection: 25ug; Diluent: 10mL
31-1025-MK	Human IgD ELISA Matched Antibody Pair	RM123 Anti-Human IgG4 Rabbit Monoclonal Antibody RM129 Biotin Anti-Human Ig Light Chain Rabbit Monoclonal Antibody	Capture: 100ug, Detection: 25ug; Diluent: 10mL
31-1024-MK	Human IgE ELISA Matched Antibody Pair	RM122 Anti-Human IgG4 Rabbit Monoclonal Antibody RM129 Biotin Anti-Human Ig Light Chain Rabbit Monoclonal Antibody	Capture: 100ug, Detection: 25ug; Diluent: 10mL
31-1023-MK	Human IgM ELISA Matched Antibody Pair	RM121 Anti-Human IgG4 Rabbit Monoclonal Antibody RM129 Biotin Anti-Human Ig Light Chain Rabbit Monoclonal Antibody	Capture: 100ug, Detection: 25ug; Diluent: 10mL
31-1325-MP	Histone H3.3 Mutation Antibody Panel (Mutated G34W, G34R, G34V)	RM263, RM240, RM307	25uL each

31-1326-MP	Histone H3 Mutation Antibody Panel (Mutated K4M, K9M, K27M, K36M)	RM363, RM191, RM192, RM193	25uL each
31-1327-MP	Histone H3 Mutation (Mutated K4M, K9M, K27M, K36M) + H3.3 Mutation (Mutated G34W, G34R, G34V) Antibody Panel	RM191, RM192, RM193, RM363, RM263, RM240, RM307	25uL each



Authorised Channel Partner/Distributor



BTL Biotechno Labs Pvt Ltd
Research is creating new knowledge

613-A, Ansal Chamber-II,
Bhikaji Cama Place, New Dehi- 110066
Phone: +91 8860924629, 7291852429
E-mail: info@biotechnolabs.com
sales@biotechnolabs.com
web : www.biotechnolabs.com

ISO 9001:2015

ReMab
Biosciences

RevMab Biosciences USA, Inc
863 Mitten Rd #104,
Burlingame, CA 94010
Tel: (650) 351-7325
E-mail : info@revmab.com
Website: www.revmab.com